

DER EE[®]

D. P. M. (MICROPROCESS)

DUAL DIGITAL MULTI-POWER

ISO 9001



DE - D12MP 1 ϕ 2W Dual Digital
Multi-Power Meter

Features

- 5 unit V, A, KW, cos φ , Hz
Can change V, A, cos φ , Hz by front sheet switch
- True RMS V/A
- Rate free setting
- Input / Output / Power is isolated
- RS-485 interface (Option)
- ABS fire-retardant case(94-V0)
- DIN case 96 x48mm

Specifications

Display : Red LED 0.4" high (Watt)
Green LED 0.3" high (V,A,PF,Hz)

Max. Display : 4 1/2 Digits (Watt)
4 Digits (V,A,PF,Hz)

Over range Indication : " O.L "

Conversion Rate : 1/sec.

Isolation : Input/Output/Power

Memory : EEPROM

Accuracy : $\pm 0.25\%$ FS. ± 2 digit (23 $\pm 5^\circ\text{C}$)

Operating Temp. : 0~50°C/ Below 80%R.H.
(No Condensation)

Storage Temp. : -10~60°C/ Below 70% R.H.
(No Condensation)

Power Supply : AC 115/230V $\pm 10\%$, 50/60Hz
Option : DC 24, 48, 120V $\pm 20\%$

Power Consumption : Approx. 4VA

Weight : Approx.550g

Dielectric Strength : AC 2000V/1min (Input/Power)

Insulation Resistance : More than 100M Ω at 500VDC

Dimensions : 96(W) x 48(H) x 144(D)mm

Panel Cut-Out : 91.5(W) x 44(H)mm

Input

Min.Input Voltage 5% of range
Current 1% of range

Voltage : AC 8~150V
AC 15~300V
AC 30~600V

Current : AC 0.01~1A , AC 0.05~5A , AC 0.1~10A

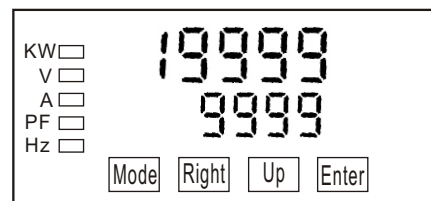
Burden : Voltage $\leq 0.1\text{VA}$
Current $\leq 0.2\text{VA}$

Watt : Corresponding to V xA

Power Factor : 0.001 to 1.000

Frequency : 40~100Hz

RS-485 Interface (Option)



Address : 1 ~ FF
Baudrate : 19200,9600,4800,2400,1200
Frame: (1)N.8.2
(2)E.8.1
(3)O.8.1
Protocol: Modbus RTU Mode

Order Code

DE - D12MP — □ — □ — □ — □

Input V

- 1 : 8~150V
- 2 : 15~300V
- 3 : 30~600V

Y : Option

Input A

- 1 : 0.01~1A
- 2 : 0.05~5A
- 3 : 0.1~10A

Y : Option

Power Supply

- 1 : AC 115/230V ±10%, 50/60Hz
- Y : Option. (DC 24, 48, 120V)

Output

- N : None
- 1 : RS-485

Code Number

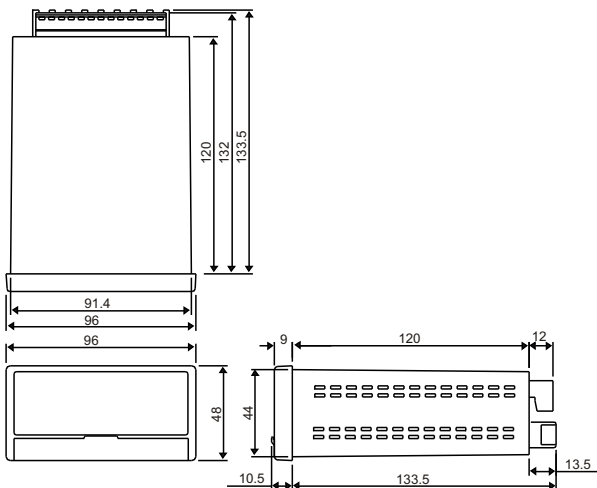
Example : DE - D12MP - 22 - 1 - 1

Input : AC 15~300V , 0.05~5A

Power Supply : AC 115/230V ±10% , 50/60Hz

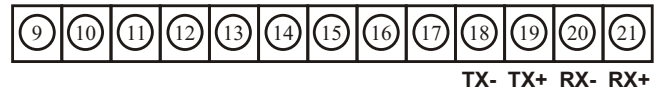
Output : RS-485

Dimensions

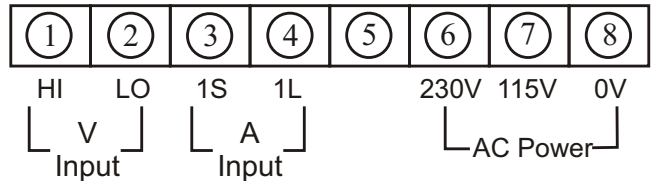


Connection Diagram

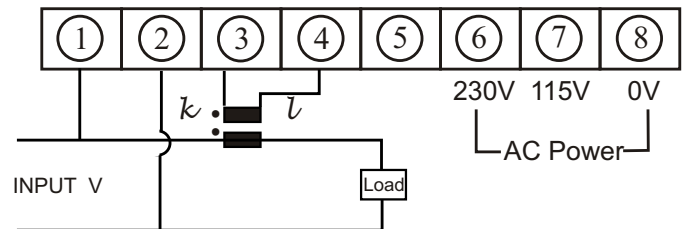
Upper



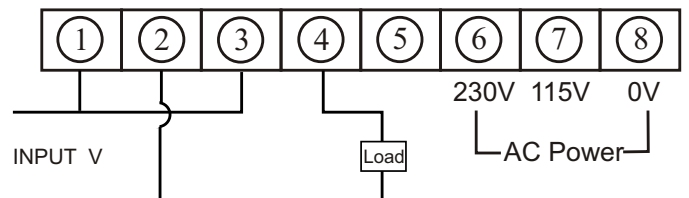
Lower



Lower



Lower



得益工業儀器有限公司

DER EE

ELECTRICAL INSTRUMENT CO., LTD.

台灣台北縣中和市中山路二段351號7F之2(華隆科技大樓)

7F-2, NO.351, SEC.2, CHUNG SHAN ROAD.,

CHUNG HO CITY, TAIPEI HSIEN, TAIWAN

TEL:886-2-2226-6789(REP.) FAX:886-2-2226-7979

E-mail:deree@ms21.hinet.net

http://www.deree.com.tw

ISO 9001

Appearance and specification may be revised if needed without notice in prior.