

DER

EE[®]

Split Core Current Transformer

ISO 9001



SCT-10

FEATURE

- Split-core type with clip-on design, easy installation at set-up devices
- 1~4V AC voltage output
- Built-in circuit protection from burn out even secondary circuit open
- Compact size works up to 80A AC RMS
- Cost-effective solution
- Two ends hook attached to secure primary conductor with cable-ties
- Applicable for power saving facilities and overload protection systems
- Isolated plastic case recognized according to UL 94-V0

SPECIFICATION

Model no.	SCT-10
Rated Primary Current	10mA ~ 80A RMS (50/60Hz), $R_L \leq 100\Omega$
Accuracy	Class 1.0, $R_L \leq 100\Omega$
Overload Capability	120A RMS continuous
Sensing Aperture	$\varnothing 10$
Output Features	refer to graphic
Coil of Secondary Circuit	3000 \pm 2 turns (with protection up to 10.2V max.)
Coil Impedance of Secondary Circuit	350 Ω \pm 2 Ω (at 25 $^{\circ}$ C)
Enclosure Material	ABS Flame Retardant (UL-94V0)
Output Conductor Length	Typical 300/700/1000/1500/2500 mm (also available with customer's request)
Dielectric Strength	1000V AC / 1min between sensor core and output
Insulation Resistance	> 100M Ω at 500V DC between sensor core and output
Weight	approx. 40 g
Operating	-20 ~50 $^{\circ}$ C, below 80% R.H. no condensation
Storage	-30 ~90 $^{\circ}$ C, below 70%R.H. no condensation

得益工業儀器有限公司

DER EE

ELECTRICAL INSTRUMENT CO., LTD.


7F-2, NO.351, SEC.2, CHUNG SHAN ROAD.,

CHUNG HO CITY, TAIPEI HSIEN, TAIWAN

TEL:886-2-2226-6789(REP.) FAX:886-2-2226-7979

E-mail:deree@ms21.hinet.net

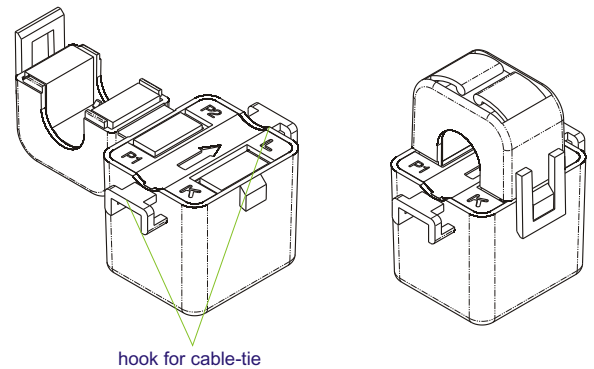
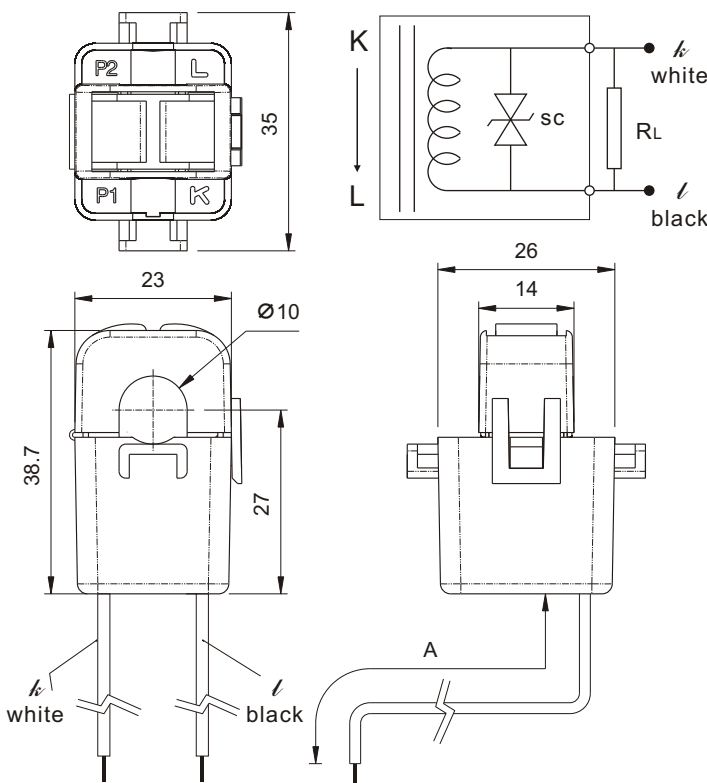
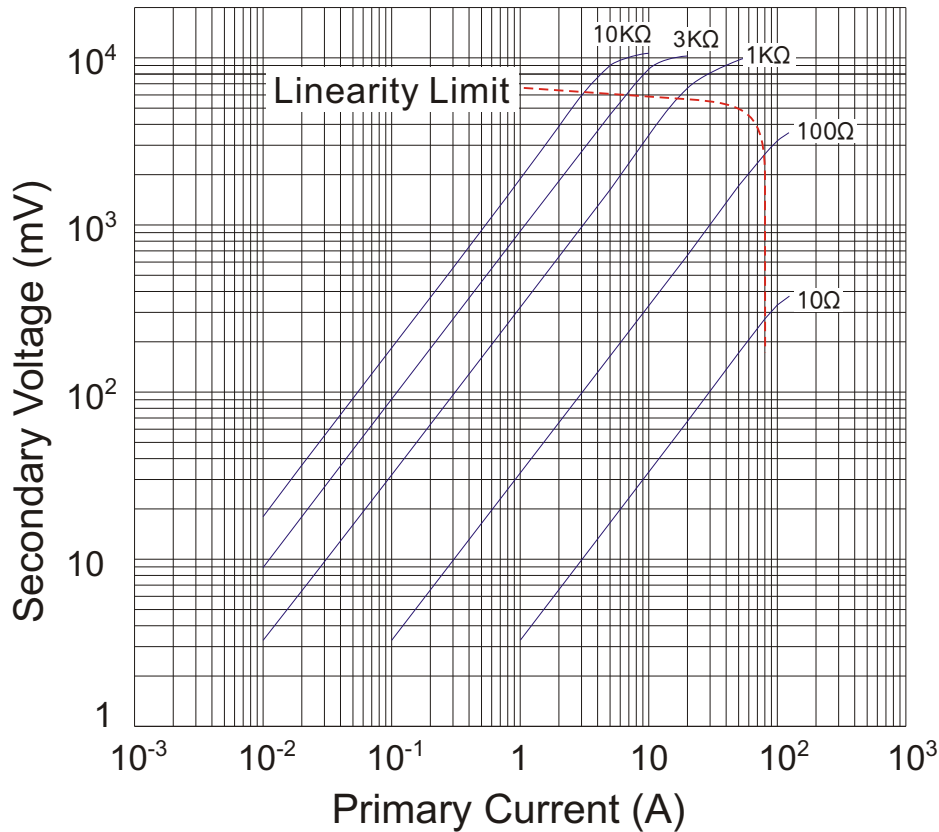
<http://www.deree.com.tw>

 Specifications and appearance may be revised if needed without any prior notice. Any further product info, please contact us.

SCT-10

Graphic of Primary Current and Secondary Voltage

f = 60Hz



A=300/700/1000/1500/2500mm
(also available with customer's request)

得益工業儀器有限公司
DER EE
ELECTRICAL INSTRUMENT CO., LTD.

7F-2, NO.351, SEC.2, CHUNG SHAN ROAD.,
CHUNG HO CITY, TAIPEI HSIEN, TAIWAN
TEL:886-2-2226-6789(REP.) FAX:886-2-2226-7979
E-mail:deree@ms21.hinet.net
<http://www.deree.com.tw>

Specifications and appearance may be revised if needed without any prior notice. Any further product info, please contact us.