

Specification & Unit	Rated Input Current	Linear Range	Rated Output Voltage	Offset (Residual) Voltage	Linearity of Rated Output Voltage	Power Supply	Consumption Current	Response Time	Thermal Drift of Output	Thermal Drift of Zero Current Offset	Hysteresis Error	Insulation Resistance	Applied Voltage Test	Operation Temp.	Storage Temp.
Model	Ampere Turn	Ampere Turn	±1%	Max. (Volt)	Max. (%)	DC Volt, ±5%	Max. (mA.)	Max. (μ sec.)	(%/°C)	Max. (mV/°C)	Max. (V)	500V DC	AC Volt, (for 1 minute)	°C	°C
DHCT-G0050	50	0~± 150	4V	±0.03V	±1%	±15V	18mA	10 μ sec.	TYP. ±0.08%/°C, Max. ±0.1%/°C	±2mV/°C	±0.035V	Over 500MΩ between aperture and terminals	2000V, 50/60Hz between aperture and terminals	-10~+80°C	-15~+85°C
DHCT-G0100	100	0~± 300								±1.2mV/°C					
DHCT-G0200	200	0~± 600								±1mV/°C					
DHCT-G0300	300	0~± 900													
DHCT-G0400	400	0~± 900													
DHCT-B0050	50	0~± 150	4V	±0.03V	±1%	±15V	18mA	10 μ sec.	TYP. ±0.08%/°C, Max. ±0.1%/°C	±2mV/°C	±0.035V	Over 500MΩ between aperture and terminals	2000V, 50/60Hz between aperture and terminals	-10~+80°C	-15~+85°C
DHCT-B0100	100	0~± 300								±1.2mV/°C					
DHCT-B0200	200	0~± 600								±1mV/°C					
DHCT-B0300	300	0~± 900													
DHCT-B0400	400	0~± 900													
DHCT-B0600	600	0~± 900													
DHCT-M0100	100	0~± 200	4V	±0.05V	±1%	±15V	20mA	25 μ sec.	TYP. ±0.08%/°C, Max. ±0.1%/°C	±1mV/°C	±0.035V	Over 500MΩ between aperture and terminals	2000V, 50/60Hz between aperture and terminals	-10~+50°C	-15~+60°C
DHCT-M0200	200	0~± 400													
DHCT-M0400	400	0~± 600													
DHCT-M0600	600	0~± 900													
DHCT-M0800	800	0~±1200													
DHCT-M1000	1000	0~±1500													
DHCT-M1200	1200	0~±1800													
DHCT-M1400	1400	0~±2100													
DHCT-M1600	1600	0~±2400													
DHCT-M1800	1800	0~±2700													
DHCT-M2000	2000	0~±3000													

Features

- ★ Superior linearity
- ★ Application to both AC and DC measurement
- ★ Compact size and light weight
- ★ Quick response
- ★ Providing absolute electrical isolation

Applications

- ★ UPS systems
- ★ AC and DC servo systems
- ★ Speed controller of motors
- ★ NC tooling machines
- ★ Inverter-controlled welding machines
- ★ Controller of lifts
- ★ Controller of electrical vehicles
- ★ Process control devices
- ★ General and special purpose inverters
- ★ Other automatic control systems

Appearance and specification may be revised if needed without notice in prior.

得益工業儀器有限公司

DER EE

ELECTRICAL INSTRUMENT CO., LTD.

台北縣中和市中山路二段351號7F之2

7F-2, NO.351, SEC.2, CHUNG SHAN ROAD,

CHUNG HO CITY, TAIPEI HSIEN, TAIWAN

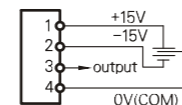
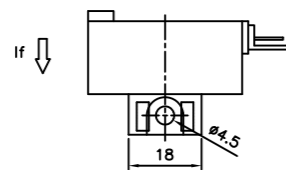
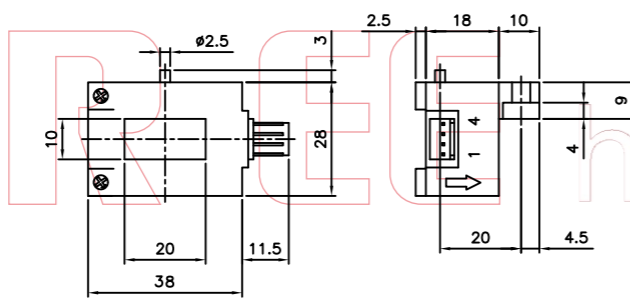
TEL:886-2-2226-6789(REP.) FAX:886-2-2226-7979

E-mail:deree@ms21.hinet.net

http://www.deree.com.tw

ISO 9001

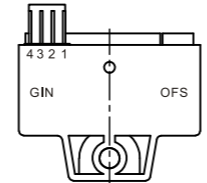
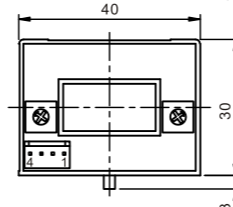
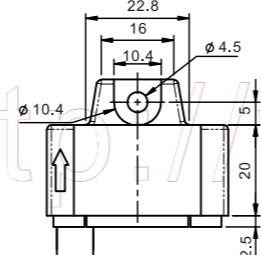
DHCT-G Bus-bar Mount / Panel Mount Type
Dimension of Aperture (Hole): 10x20mm



Connector Pin Identification
Pin Span 2.5mm

N.W.:Approx. 46g / pce
Package: 10 pcs/box

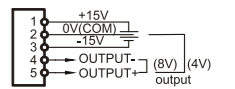
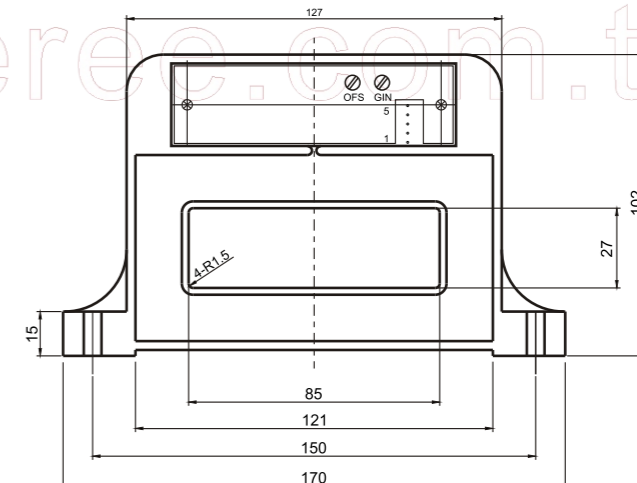
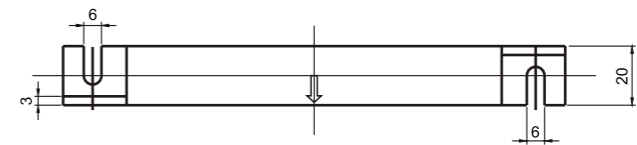
DHCT-B Bus-bar Mount / Panel Mount Type
Dimension of Aperture (Hole): 10.4x20.4mm



Connector Pin Identification
Pin Span 2.5mm

N.W.:Approx. 49g / pce
Package: 10 pcs/box

DHCT-M Panel Mount Type
Dimension of Aperture (Hole) : 27x85mm



Connector Pin Identification
Pin Span 2.5mm

N.W.:Approx. 500g / pce
Package: 1 pce/case